

Clallam County

Master Gardener Monthly

September 2024

Vol 1: No 6



GREEN THUMB EDUCATION SERIES

Saint Andrew's Episcopal Church (in-person)
510 E Park Ave, Port Angeles

[Click here to join via Zoom](#), or join by phone at 253-215-8782.

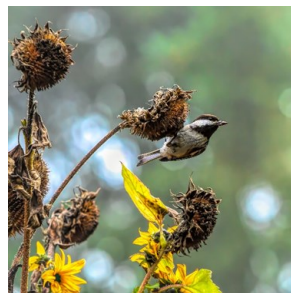
Preserving the Harvest Thu, September 12, 12–1 p.m. Danielle Carson

Join WSU Community Health Program Coordinator and Food Preservation Advisor Danielle Carson to learn to make the most of your garden's bounty. In a jam-packed hour, you will get an overview of the history of food preservation, food safety considerations, and preservation methods, including fermentation, canning, dehydration, pickling and more. For additional questions about food preservation visit extension.wsu.edu/clallam/food-and-nutrition/food-preservation-and-safety/



Gardening Choices Helpful to Wintering Birds Thu, September 26, 12–1 p.m. Katja Bridwell

Not all our fine feathered friends on the Olympic Peninsula wing away to warmer climes. Many of the birds we see and love in our gardens stick around all year and need a food supply to get them through the winter. Join Environmental Scientist Katja Bridwell to find out what to plant in your garden to help feed birds when their options are limited.



—Content submitted by **Lorraine Eckard**

DIGGING DEEPER SATURDAYS SERIES

Woodcock Demonstration Garden
2711 Woodcock Road, Sequim
Presentations are outdoors

Fall Berry Chores Sat, September 7, 10:30 a.m.–12 p.m. Jeanette Stehr-Green

Veteran Master Gardener and berry enthusiast Jeanette Stehr-Green will help you get your plants ready for the winter and primed to produce well next season! Learn how to get the best possible harvests from your



berry plants. Jeanette has grown strawberries, raspberries, blackberries, and blueberries on the North Olympic Peninsula for over 20 years.

Reflections on the Garden: Q&A Sat, September 21, 10:30 a.m.–12 p.m. Tom Del Hotal, Jan Danford, Audreen Williams, Laurel Moulton (left to right in photo below)

A panel of veteran Master Gardeners will share their reflections on the 2024 gardening season. They will talk about what went well in their own gardens this year and what did not and also answer your questions about ornamental plants, fruit and vegetable crops, lawns, beneficial insects, and pests and diseases. They will share water saving gardening tips as well.



—Content submitted by **Audreen Williams**



WSU EXTENSION
Clallam County

Check out our webpages at extension.wsu.edu/clallam/mg

Sign up to get the digital copy of the Clallam County Master Gardener Monthly to more easily access the links to Zoom lectures and resource materials.

Go to <https://tinyurl.com/v53n4t74> or scan the QR code with your cell phone camera. Contact (360) 565-2678 or (360) 565-2679 for more information.



Woodcock Walkabout

Thursday, September 12, 10:00 a.m.
2711 Woodcock Road, Sequim

Take a guided tour of the Master Gardener demonstration gardens.

In addition to a range of ornamental gardens, there is an extensive organic vegetable garden display that includes examples of vegetables that grow well throughout the year, and demonstrates growing techniques and tools that will help you get the most out of your home vegetable garden.

Woodcock Demonstration Garden is open to the public during daylight hours year-round. Parking is available just west of the main gated entrance.

2nd Saturday Garden Walk at Fifth Street Community Garden

Saturday, September 14, 10:00 a.m.
328 E Fifth St, Port Angeles

(across from City Hall)
Rain or Shine!

Join veteran Master Gardeners (left to right) Bob Cain, Laurel Moulton, Audreen Williams and Jan Bartron on the final walk of the season. Find out what is happening or should be happening in local vegetable gardens. Topics will include but not be limited to late summer/fall tomato care, multiple aspects of saving seeds, and using cover crops in the vegetable garden.

Come see this year's gardening successes in the 50-plus garden



plots and get ideas for laying out your garden next spring including the design of and various materials used for raised garden beds and plant support and trellising structures.

ON THE AIR

KSQM Garden Show 91.5 FM

Slugs, Snails, and Puppy Dog Tails

with Bob Cain

Tue, September 3 at 11:40 a.m. (repeat)

Lovely Lettuce

with Bob Cain

Fri, September 6 at 6:40 p.m.

Tue, September 10 at 11:40 a.m. (repeat)

Lawn Replacements

with Jeanette Stehr-Green

Fri, September 13 at 6:40 p.m.

Tue, September 17 at 11:40 a.m. (repeat)

The Turnip Family

with Bob Cain

Fri, September 20 at 6:40 p.m.

Tue, September 24 at 11:40 a.m. (repeat)

Controlling Horsetail Ferns

with Jeanette Stehr-Green

Fri, September 27 at 6:40 p.m.

Tue, October 1 at 11:40 a.m. (repeat)

MASTER GARDENER PLANT CLINIC

The plant clinic offers gardening advice on plant identification, pest and disease control, and best practices for fruit, vegetable, and ornamental gardening.

Port Angeles Plant Clinic

Swain's General Store

Fri, September 6, 10 a.m.-1 p.m.

Fri, September 20, 10 a.m.-1 p.m.

Sequim Plant Clinic @ Woodcock

Woodcock Demonstration Garden

2711 Woodcock Rd

Sat, September 7, 9:30 a.m.-12:30 p.m.

Sat, September 21, 9:30 a.m.-12:30 p.m.

Sequim Farmers & Artisans Market

Sat, September 7, 9 a.m.-2 p.m.

Sat, September 14, 9 a.m.-2 p.m.

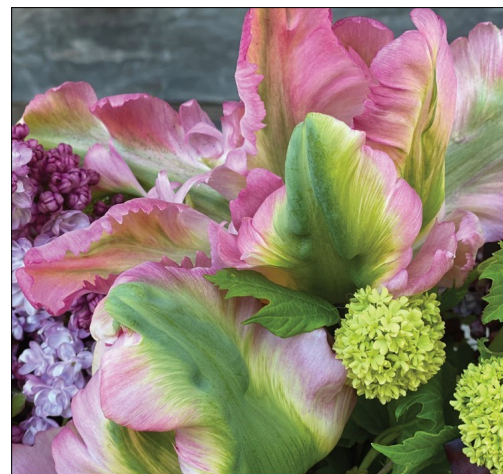
Sat, September 28, 9 a.m.-2 p.m.

Email questions to:

mgplantclinic.clallam@gmail.com.

For additional information, go to:

extension.wsu.edu/clallam/mg/plant-clinics



2025

Master Gardener Foundation Calendar

On Sale Now! Only \$5!



Scan the QR code to the left to view the flipbook online and see all the calendar pages.



WSU EXTENSION
Clallam County

Scheduled presentations are subject to change. Visit the WSU Extension Clallam County website calendar at extension.wsu.edu/clallam/events/ for the latest information on upcoming presentations. For questions, call 360-565-2678.

For information on calendar sales locations and times in Port Angeles and Sequim as well as online sales and mail order, please go to the Master Gardener Foundation website at clallammgf.org/